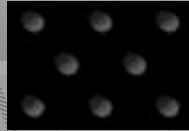




2007 Product Displays &
Point-Of-Purchase Items

75th Anniversary Items



No. 142229
75th Anniversary Magnet
 Rugged 3-D magnet, extra thick.
 Dimensions: 2.8125" x 3.75" x .375"
 7.144cm x 9.525cm x .9525cm

No. 75ABS
75th Anniversary Bar Stool
 Take a break and relax on this padded seat bar stool. (Assembly Required).
 Dimensions: 29" tall
 73.66cm.



No. 191625
75th Anniversary Lapel Pin
 Celebrate in style with this embossed pin with tie-tack back.
 Dimensions: .875" x 1.25"
 2.222cm x 3.175cm



No. PC75-01
75th Anniversary Postcard
 Dimensions: 6" x 4.25"
 15.24cm x 10.8cm

No. 191624
75th Anniversary Business Card Holder/Mints
 Share some mints, then use as a holder for your business cards.
 Dimensions: 2.5" x 3.625"
 6.35cm x 9.207cm



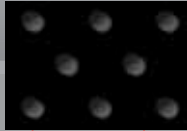
No. ZLP-75
75th Anniversary License Plate
 Add Zippo flair to your vehicle.
 Dimensions: 12" x 6"
 30.48cm x 15.24cm



The story of Zippo Manufacturing Company is the story of its people, from the founder, George G. Blaisdell, to the many Zippo employees, customers, and collectors who have played a part in its 75-year history. Their loyalty to Zippo has made this one of America's great



75th Anniversary Items



No. P07HTW
Zippo 75th Anniversary White Cap

White cotton cap features black Zippo logo with red flame on front and 75th Anniversary logo on back of cap. Size to fit using adjustable strap with tuck-in closure.

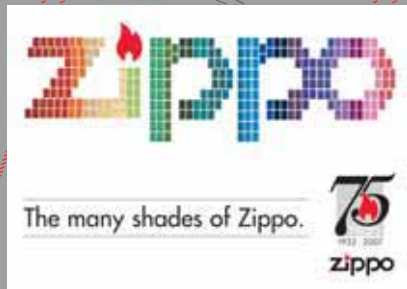


Zippo Men's / Ladies' 75th Anniversary White Polo

White polo with 75th Anniversary logo is 100% mercerized cotton with matching chevron textured collar and cuffs.

Ladies' White Polo:
 Small - No. P07WPW-S
 Medium - No. P07WPW-M
 Large - No. P07WPW-L
 XLarge - No. P07WPW-XL

Men's White Polo:
 Small - No. P07MPW-S
 Medium - No. P07MPW-M
 Large - No. P07MPW-L
 XLarge - No. P07MPW-XL
 XXLarge - No. P07MPW-XXL
 XXXLarge - No. P07MPW-XXXL



No. PC75-02
75th Anniversary Many Shades of Zippo Postcard

Dimensions: 6" x 4.25"
 15.24cm x 10.8cm

No. PSTR-75
75th Anniversary Poster

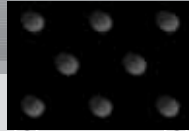
Dimensions: 24" x 18"
 60.96cm x 45.72cm



companies.
 Today, Zippo has produced more than 425 million lighters, each one backed by its famous lifetime guarantee, "It works or we fix it free.™"
 Join us in the celebration with these select 75th Anniversary items.

Displays

DISPLAY PANELS HOLD BLACK PLASTIC GIFT BOXES,



Display panels hold black plastic gift boxes, cardboard boxes, and individual tins.



No. 142470 (Display) & No. 142477 (Base) (FSB96)

Light and Motion Display with Floor Stand storage base. Display 96 Zippo products on top, and store extra stock on two shelves in the lockable base. Base unit ships flat, and provides ample storage for additional stock.

Dimensions: 15.875" x 18.875" x 67"
40.32cm x 47.94cm x 170.2cm

No. 142470 (FS96)

Light and Motion Display. Designed for countertop use, this unit has all the features of FSB96, except the storage base.

Dimensions: 15.875" x 15.875" x 37"
40.32cm x 40.32cm x 93.98cm



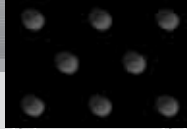
No. 142632

Display 192 Zippo products in this floor stand with swivel base. Each side holds 96 pieces.

Dimensions: 27" x 27" x 80"
68.58cm x 68.58cm x 203.2cm



All electric displays are 110V (U.S. Standard)



No. 142525

Countertop display holds up to 16 Zippo products in a variety of packaging options. Features include a Zippo header, security cable, and lock.
 Dimensions: 13.75" x 6" x 18.875"
 95.88cm x 15.24cm x 47.94cm



No. 142145

Compact countertop display holds eight Zippo products in most packaging variations. Features include a Zippo header, security cable (optional), and lock.
 Dimensions: 8.5" x 6" x 18.875"
 21.59cm x 15.24cm x 47.94cm



No. 142129/EFC

Countertop display holds up to 10 Zippo products in a variety of packaging options and an empty Zippo 4 oz. Lighter Fluid can.
 Dimensions: 12.5" x 7.5" x 17.5"
 31.75cm x 19.05cm x 44.45cm



No. 142523 (ZMBO60) Light and Motion Display

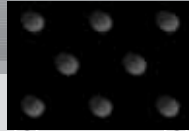
Battery-operated or manual turn display with on/off switch. Reflective mirrored prism utilizes natural light to illuminate Zippo header. Displays 60 Zippo products in gift boxes, cardboard boxes, or individual tins. Uses four standard "D" batteries (included).
 Dimensions: 14.75" x 14.5" x 25.25"
 37.46cm x 36.83cm x 64.13cm

No. 142462 (ZM60) not shown

60 Zippo products in gift boxes, cardboard boxes, or individual tins.
 Dimensions: 15.875" x 15.875" x 27"
 40.32cm x 40.32cm x 68.58cm

No. 142129

(International Version)
 Countertop Display holds up to 10 Zippo products in a variety of packaging options. Does not include fuel can.
 Dimensions: 12.5" x 7.5" x 17.5"
 31.75cm x 19.05cm x 44.45cm



No. 142611

Small Showcase

Lighted floor stand, or counter display with up to three adjustable shelves. Lockable base door provides ample storage for additional stock.

Dimensions: 16" x 16" x 41"
40.64cm x 40.64cm x 104.1cm



No. 142612

Large Showcase

Lighted floor stand with up to four adjustable shelves. Lockable base door provides ample storage for additional stock.

Dimensions: 27" x 27" x 80"
68.58cm x 68.58cm x 203.2cm



No. 142130

Fuel Panel

Use your 60 piece ZM to showcase Zippo fuel and accessories with this display panel. Features 2 empty domestic Zippo butane cans, 2 empty domestic Zippo lighter fluid cans, and flint card (for display purposes only).

Dimensions: 7.75" x 18.75"
 19.68cm x 47.62cm



No. 142633

Display 30 Zippo products in this counter stand with swivel base. Each side holds 15 pieces. Dimensions: 16" x 16" x 31"
 40.64cm x 40.64cm x 78.74cm

No. 142418

ZM Retro-Fit Base

Retro-fit base allows the current 60 and 96 piece ZM displays to stack correctly on the top of Zippo's older floor stands. (The footprint has changed on "new style" 60 & 96 piece ZMs; displays will not fit properly on previous floor stands without this addition).

Dimensions: 17.25" x 17.25"
 43.81cm x 43.81cm





No. 142750

20 Piece Clear Display

4 facings by 5 deep. Can be used as a counter or wall display. Heavy-duty frosted plastic with two shelves. MPLs not included.

Dimensions: 6" x 8" x 16"
15.24cm x 20.32cm x 40.64cm

No. 142535

Individual Display

Heavy-duty plastic bottom with metal header. MPLs not included.

Dimensions: 7.75" x 5.875" x 11.125"
19.685cm x 14.9225cm x 28.2575cm



No. 142536

4 Piece Chrome Display

Heavy-duty plastic bottom with metal backing (three MPLs are shown upright, one is displayed horizontally in the foreground). MPLs not included.

Dimensions: 10.5" x 5.25" x 11.5"
26.67cm x 13.335cm x 29.21cm





No. 142132

Acrylic MPL® Counter Display

6 facings, heavy-duty acrylic with two shelves. Additional tray holds butane cans. MPLs and butane not included.
 Dimensions: 16" x 16" x 63"
 40.64cm x 40.64cm x 160.02cm



No. 142537

12-Pack Self Display

3 facings by 4 deep. Durable cardboard construction. Complete with 12 MPLs.
 Dimensions: 15.75" x 7.75" x 11.75"
 40.005cm x 19.685cm x 29.845cm



General Motors Trademarks are used under license to Zippo Manufacturing Corporation.

"The trademarks Beam®, Jim Beam®, Jim Beam and design®, and the Jim Beam bottle design TM are used here under license from Jim Beam Brands Co."

© 2006 Playboy. PLAYBOY, PLAYBOY BUNNY and RABBIT HEAD DESIGN are trademarks of Playboy Enterprises International, Inc. and used under license by Zippo Manufacturing Co., Bradford, PA, USA.



© 2006 NFL Properties LLC. Team names/logos are trademarks of the teams indicated. All other NFL-related trademarks are trademarks of the National Football League.

JUST LIKE THE MPL®, THESE SIGNS HAVE MANY USES.

MPL® Signage



These panels fold into a triangle as shown above.

No. 142269

ZM Topper/Counter Card - MPL®

Great for the top of your ZM display or on the counter.
 (2 panels-Silver MPL, 1 panel-Black MPL)
 Dimensions: 8.5" x 9"/panel (3 panels)
 21.59cm x 22.86cm/panel (3 panels)

No. 142264

Hanging MPL®

Plastic two-sided MPL sign. Easy to hang. Includes string to slip through tack hole on sign.
 Dimensions: 11" x 29"
 27.94cm x 73.66cm



Signage



No. 142634

Flame Light Box

The iconic Zippo flame glows along with the Zippo logo. Perfect for counter top or window display.

Dimensions: 7.25" x 14" x 5.625"
18.41cm x 35.56cm x 14.29cm



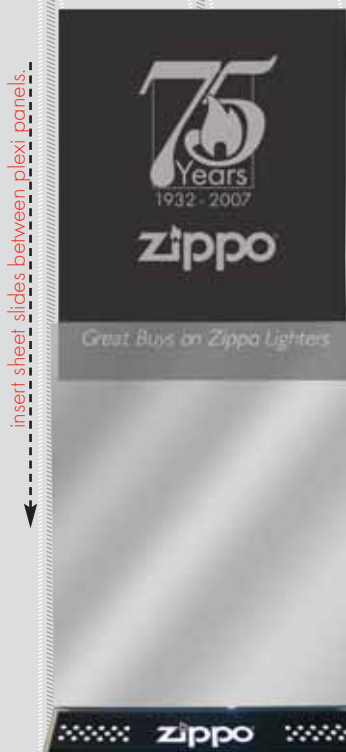
No. 142252

3D Logo Sign

Illuminated electric sign.

International version also available, please see price list.

Dimensions: 24" x 9"
60.96cm x 22.86cm



No. CCD-05

Counter Card Display

Clear plexiglas panels offer easy display of standard 8.5" x 11" sheets.

Base plate is screen printed with Zippo logo and chimney pattern.

Dimensions: 8.75" x 11.875"
22.22cm x 30.16cm



No. 142586

Neon Lighter Sculpture

Neon Zippo lighter on black base with Zippo logo. *International version also available, please see price list.*

Dimensions: 12" x 9"
30.48cm x 22.86cm





No. 142126

Lenticular Motion Sign

Moving lighter graphic with opening and closing lid. Effective with or without battery operation.

Dimensions: 8.125" x 9"

20.64cm x 22.86cm



No. 142588

Neon Clock

Battery operated illuminated clock with electric style neon.

International version also available, please see price list.

Dimensions: 14 " diameter

37.47cm diameter



No. 142225

Metal Sign

Classic, yet trendy metal sign features embossed graphics and includes tack holes to hang on any flat vertical surface.

Dimensions: 15" x 10"

38.1cm x 25.4cm

No. 142223

Light-Up Box

Zippo is aglow with stunning neon 3-D effect. Acrylic unit stands on counter or hangs on wall.

Dimensions: 16.25" x 16.25" x 3.75"

41.275cm x 41.275cm x 9.525cm

Signage



No. 142255
Zippo Rotating Sign
Illuminated electric sign.
Dimensions: 18" x 21"
45.72cm x 53.34cm



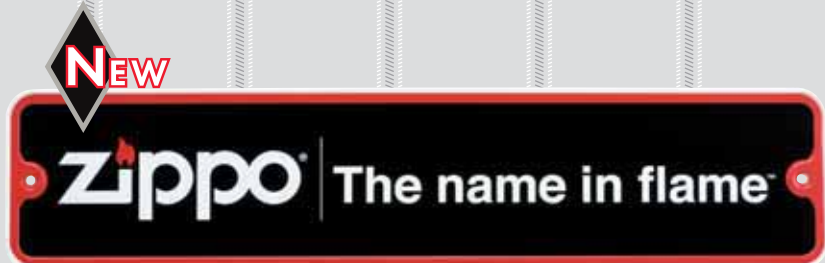
No. 142251
3-D Zippo Dangler
3-D plastic lighter sign.
Dimensions: 19.75" x 26.25"
50.17cm x 66.68cm



No. SCS02
Static Cling Sticker
Zippo For Real
Inside application surface for
doors or windows.
Dimensions: 4" x 6"
10.16cm x 15.24cm



No. 142228
Zippo Logo Street Sign
Durable metal sign, includes tack holes
for easy display.
Dimensions: 18" x 4"
45.72cm x 10.16cm



No. 142227
Zippo Name in Flame™ Street Sign
Durable metal sign, includes tack holes for easy display.
Dimensions: 18" x 4"
45.72cm x 10.16cm



No. 142271
Horizontal Banner
Dimensions: 8' x 3'
2.438M x .9144M

No. 142250
Deluxe Horizontal Banner
Heavy-duty vinyl construction.
Dimensions: 8' x 3'
2.438M x .9144M



No. 142268
ZM Topper/Counter Card - For Real
Great for the top of your ZM display or on the counter.
(2 panels-For Real logo, 1 panel-Great Gift Ideas)
Dimensions: 8.5" x 9"/panel (3 panels)
21.59cm x 22.86cm/panel (3 panels)

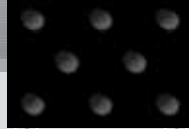


No. 142270
Black Cardboard Logo Sign
Zippo corporate logo printed on high gloss coated stock.
Dimensions: 30" x 12"
76.2cm x 30.48cm



No. 142127
Counter Sign
Zippo For Real logo on dark plexiglas.
Dimensions: 10" x 5"
27.31cm x 12.7 cm

Posters



No. PSTR-CAS
Classic American Story Poster
 Dimensions: 39.5" x 13.25"
 100.3cm x 33.65cm



No. PSTR-A
Anatomy Poster
 Dimensions: 17" x 22"
 43.18cm x 55.88cm

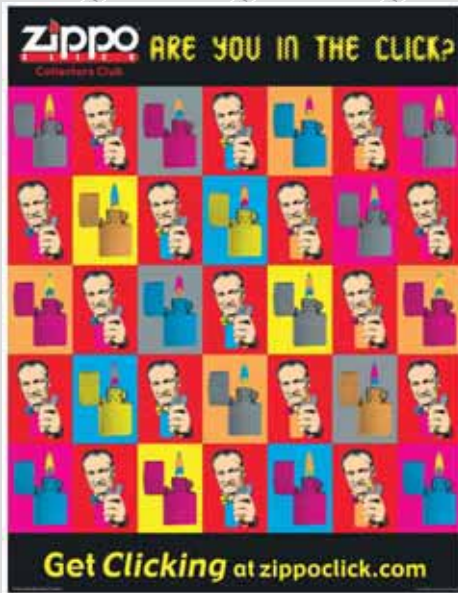


No. PSTR-NF
The Name in Flame™ Poster
 Dimensions: 22" x 17"
 55.88cm x 43.18cm



No. PSTR-AF
American Flag Poster
 Dimensions: 24.5" x 18"
 62.23cm x 45.72cm

Zippo CLICK



No. PSTR03-ZC

Click Poster

Dimensions: 17" x 22"
43.18cm x 55.88cm



No. COLL-05

Collectors' Guide

Includes Zippo lighter identification codes and other collector information.



No. ZCF06

Click Membership Brochure

Application to join the Zippo Click.

Zippo Click is the gateway into the world of Zippo lighter collecting. With members in 56 countries around the world, Zippo enthusiasts interact with the growing community of people who buy, sell, trade, collect, and talk Zippo.



Collectors Club

KEEP YOUR ACCESSORIES HANDY.

Lanyards



Enlarged detail of logo imprint

No. 122122

Zippo Round Lanyard

Dimensions: 38"
96.52cm

Corded lanyard has two adjustable slides to regulate degree of tightness, and detachable 1" key ring with snap clip, bulldog clip, and nylon loop.



Enlarged detail of logo imprint

No. 122121

Zippo Woven Neck Strap

Dimensions: 42"
106.68cm

Flat woven lanyard has detachable spring loaded swivel snap clip and 1" key ring with snap clip and nylon loop.

Specialties



No. CM02
Zippo Change Mat
 Perfect for countertop or next to your cash register.
 Dimensions: 18.25" x 12.25"
 46.36cm x 31.12cm

No. CP05-Guide Collectors' Pocket Guide

Pocket size guide to date your Zippo lighters. Credit card size.
 Dimensions: 2.125" x 3.375"
 5.397cm x 8.572cm



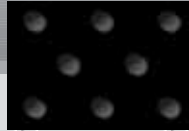
No. ZAT
Zippo Ashtray
 Durable ashtray with Zippo logo.
 Dimensions: 5.25" diameter
 13.34cm diameter



No. 142226
Lighter Display Base
 Highlight any Zippo pocket lighter with these great lighter display bases. Lighters fit snug into base and are held in magnetically. Great for use with Small and Large Showcases.
 (Please order in multiples of 10).
 Dimensions: 2.5" x 1.375" x 1.8125"
 6.35cm x 3.492cm x 4.604cm



No. 142224
Magnet
 Rugged 3-D magnet, extra thick.
 Dimensions: 2.75" x 3.375" x .375"
 6.985cm x 8.5725cm x .9525cm



No. ZPIN Sticky Note Pads

Don't miss out on any important details with these reminder notes. Features the Zippo logo and "The Name in Flame™" tag.
Dimensions: 3" x 2.875"
7.62cm x 7.302cm



No. 151001 Zippo Lighter Lapel Pin

Brass plated pin with red flame, tie-tack back.
A classic Zippo icon since the 1960s!
Dimensions: .4375 x .5
1.111cm x 1.27



No. ZS-158 Zippo Lighter Bobble Pin

Adding some "spring" to an American original.
Attached flame bobbles.
Dimensions: 1.0625" x 1.25"
2.6987cm x 3.175cm



No. 191626 MPL® Bobble Pin

Adding some "spring" to the MPL, colors may vary.
Dimensions: .4375" x 1.625"
1.111cm x 4.125cm



NEW

Zippo Black Cap

Black cotton cap features white Zippo logo with red flame on front and The name in flame™ tag line on back of cap. Size to fit using adjustable strap with tuck-in closure.
No. P07HTB

Zippo Micro Twill Bomber Jacket

This water resistant 100% polyester microfiber twill bomber jacket features narrow elastic hem for a comfortable fit, front and pocket zippers, and adjustable snap button cuffs. Limestone color jacket highlights a black embroidered Zippo logo with tag line.

Small - No. P07JK-S
Medium - No. P07JK-M
Large - No. P07JK-L
XLarge - No. P07JK-XL
XXLarge - No. P07JK-XXL
XXXLarge - No. P07JK-XXXL



NEW



NEW

T-Shirt - Property of Zippo

Show your team spirit with this heavyweight blend black t-shirt featuring the classic Zippo logo. Pre-shrunk 50% cotton & 50% polyester.

Small - No. P07T-S
Medium - No. P07T-M
Large - No. P07T-L
XLarge - No. P07T-XL
XXLarge - No. P07T-XXL
XXXLarge - No. P07T-XXXL

Zippo Men's / Ladies' Black Polo

This comfortable polo features soft fabric - 60% pima cotton & 40% polyester with subtle pattern and embroidered Zippo - The name in flame™ logo.

Ladies' Black Polo

Small - No. P07WPB-S
Medium - No. P07WPB-M
Large - No. P07WPB-L
XLarge - No. P07WPB-XL

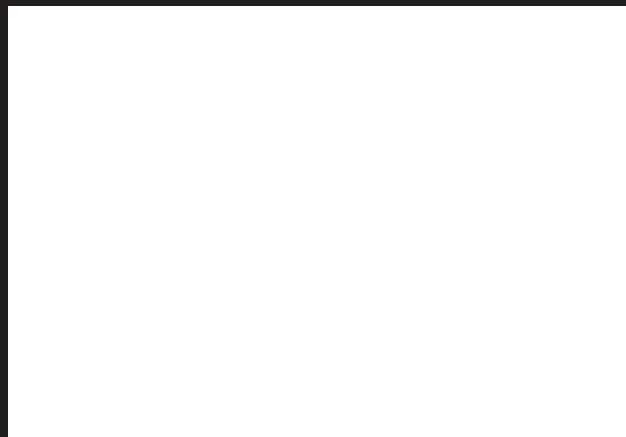
Men's Black Polo

Small - No. P07MPB-S
Medium - No. P07MPB-M
Large - No. P07MPB-L
XLarge - No. P07MPB-XL
XXLarge - No. P07MPB-XXL
XXXLarge - No. P07MPB-XXXL



NEW

©2007 Zippo Manufacturing Co.
All lighter decorations are copyrighted by Zippo Manufacturing Co.
All Rights Reserved.



zippo[®]
The name in flame.[™]